



BAMBOO LUXURY VILLA

SIMPLICITY, ELEGANCE & CONTINUOUS GROWTH  
AWAITS YOU!



10 LIMITED UNITS AVAILABLE



HUAY YAI  
PATTAYA



DOUBLE  
PARKING



COMFORT  
LAYOUT



SECURITY  
24/7

FOR MORE INFORMATION: +66 61 554 5546 (ENGLISH/THAI) +66 880 070 246 (CHINESE/THAI)

BAMBOOLUXURYVILLA.COM



# THE DEVELOPER

WHERE UNDERSTANDING TRANSFORMED TO REALITY

*“With Bamboo Luxury Villa, I sought to create more than just a home – I envisioned a living experience where architecture, nature and human spirit harmonize. Every detail, from the interplay of light and space to the seamless integration of gardens, reflects my philosophy: design should inspire and nurture. Here, luxury is not defined by opulence alone but by the balance of beauty, functionality, and sustainability. These villas are sanctuaries where life flows effortlessly, fostering peace, creativity, and a profound connection to the environment.”* - Mario Kleff®, Designer & CEO



## TRIO BALANCE DESIGN

A perfect harmony of three key elements: **Building, Pool, and Garden**. Spaces are thoughtfully allocated to achieve a balanced proportion, creating a seamless connection between architecture and nature. Surrounded by lush greenery and trees, and cooled by the tranquil pool waters visible from every living space, the villa offers an atmosphere of relaxation in every corner. This is a true state of the art, designed to cultivate happiness and serenity.

# ARCHITECTURAL FEATURES

## GROUND FLOOR PLAN



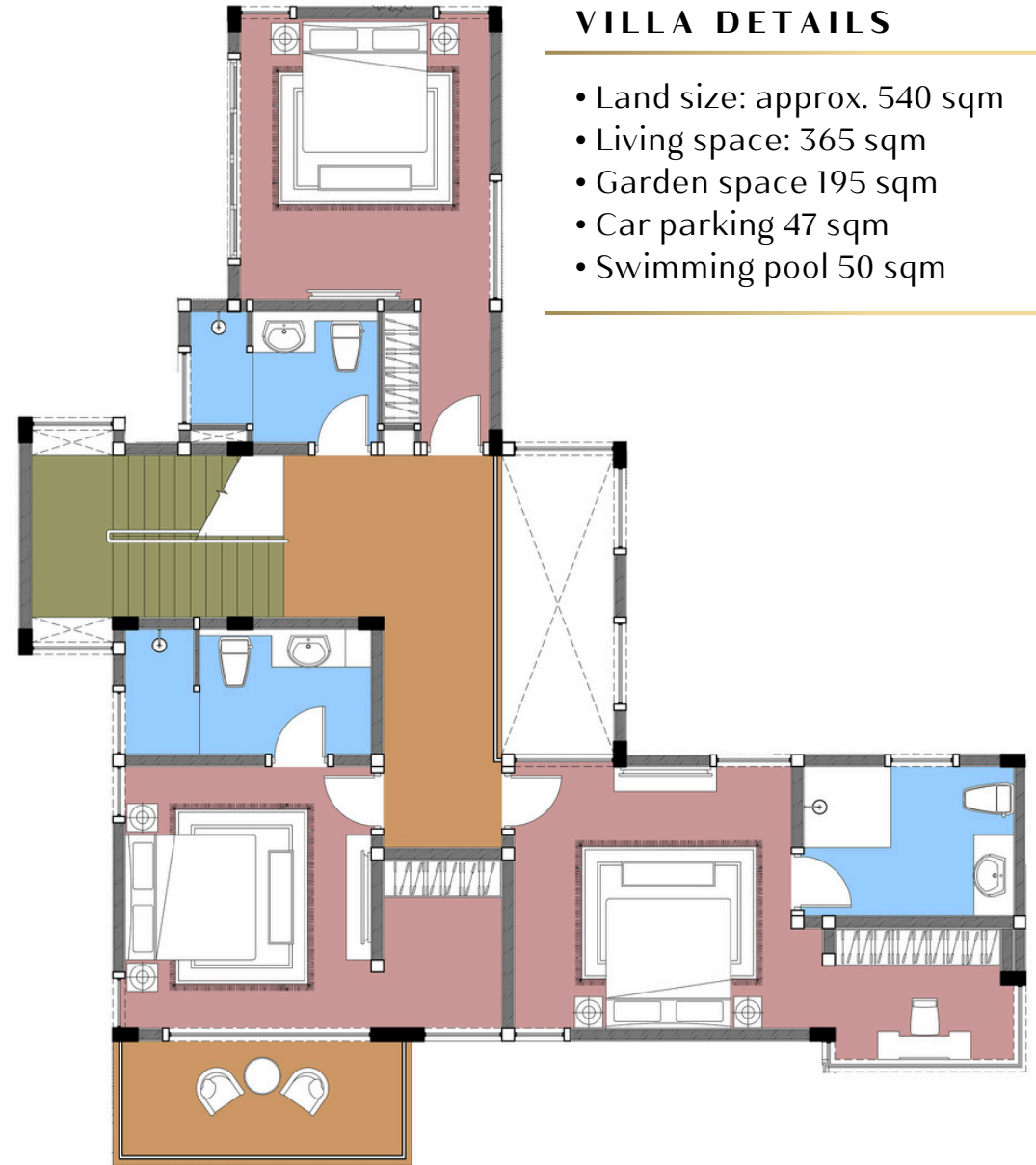
### LUXURY LIVING IN BAMBOO LUXURY VILLA

- Ceiling height up to 3.6 meters
- Sunroof living room connected to pool and gardens
- Dual kitchen, European and Asian cooking
- Private working space with green area



## FAMILY LAYOUT

Bamboo Luxury Villa seamlessly blends contemporary Western and Asian design elements, offering the perfect family configuration with **4 bedrooms**, a **maid's quarter**, **5 well-appointed bathrooms**, **dual kitchens**, a **private pool**, **double garage**, and **working space**. Set amid lush tropical gardens, it offers elegance, comfort, and complete privacy for modern family living.



## VILLA DETAILS

- Land size: approx. 540 sqm
- Living space: 365 sqm
- Garden space 195 sqm
- Car parking 47 sqm
- Swimming pool 50 sqm

2ND FLOOR PLAN

# THE MILLION DOLLAR HOUSE

---

UPGRADE AND CUSTOMIZE YOUR LIVING WITH OUR DESIGN TEAM

Experience luxury redefined with **real limestone cladding**, **double or triple glazing**, and a **state-of-the-art security system** paired with **automated sliding doors**. Tailor your interiors with **custom furniture** and a **high-fidelity audio system** for unmatched comfort and style. Our expert in-house designers provide personalized solutions, ensuring your home not only meets but exceeds expectations—creating a space that looks and feels worth more than a million dollars.



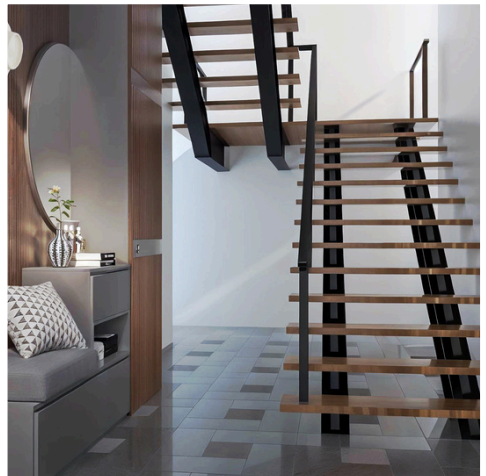
BAMBOO LUXURY VILLA



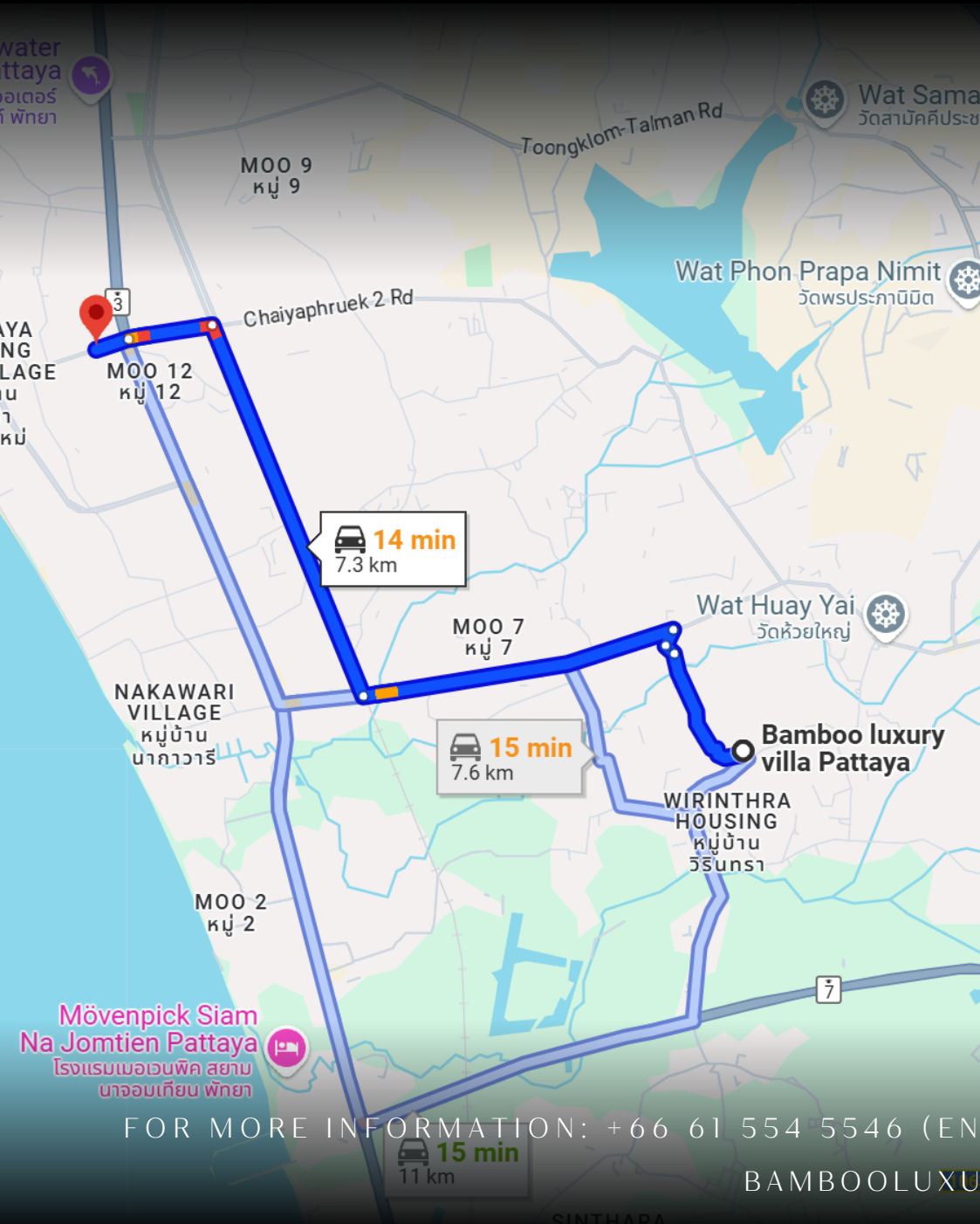


BAMBOO LUXURY VILLA

WHERE VALUE GROWS







HUAY YAI

FROM US TO YOU

ONLY 20 MIN. TO JOMTIEN BEACH



FOR MORE INFORMATION: +66 61 554 5546 (ENGLISH/THAI) +66 880 070 246 (CHINESE/THAI)

BAMBOOLUXURYVILLA.COM

# BAMBOO LUXURY VILLA

## TRUST IN QUALITY

A STRONG TEAM FROM DESIGN TO CONSTRUCTION AND BACK HOUSE SERVICES

PRE-SALE PRICE 15.9 MB  
REGULAR PRICE 17.9 MB

